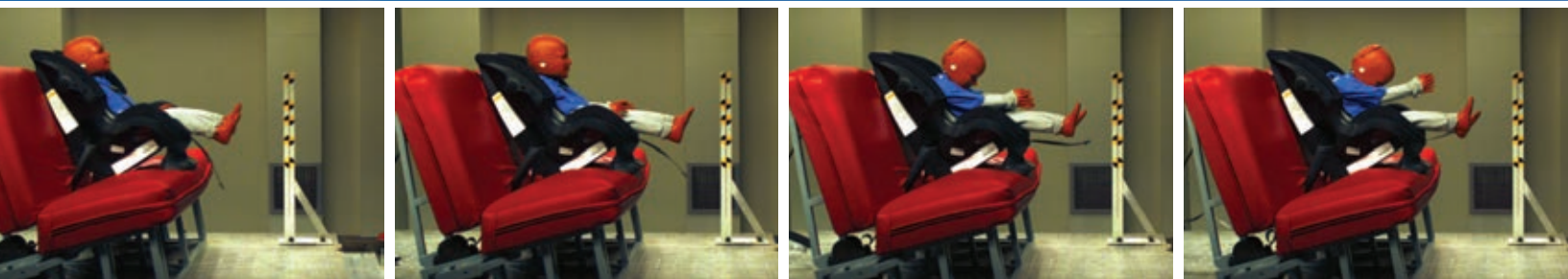


FASTCAM SA3

HIGH-G HIGH SPEED VIDEO SYSTEM



A rugged, megapixel High-Speed imaging system for General Application and Automotive Safety Test recording

2,000fps operation at 1024 x 1024 pixels

Designed referring to SAE-J211 to provide ruggedness and reliability, the Photron FASTCAM SA3 offers high performance recording for a broad range of applications in research and development and automotive safety testing.

Like the award winning FASTCAM MH4 multi-head camera system the FASTCAM SA3 ensures system stability under High-G conditions and long term system reliability.

The FASTCAM SA3 offers remote control through user selectable camera controls on rear panel, Gigabit Ethernet communications or through optional RS422 keypad with built-in 5" LCD display.

The FASTCAM SA3 provides exceptional light sensitivity, image quality and color fidelity through genuine 12-bit ADC, with extra record time provided by selecting 8-bit record mode.

Two FASTCAM SA3 models are available, Model 60K and Model 120K. Both systems offer higher frame rates at reduced image resolution and two microsecond global shutter.

Benefits

■ Performance:

FASTCAM SA3 Model 60K

1024 x 1024 pixel resolution at frame rates up to 1,000 fps, and at reduced resolution up to 60,000 fps

FASTCAM SA3 Model 120K

1024 x 1024 pixel resolution at frame rates up to 2,000 fps, and at reduced resolution up to 120,000 fps

- User selectable Variable Framerate / Resolution
- Suitable for operation in HiG environments. Operation tested to 100G, 10ms, 6 axis
- 17 μ m pixel size to ensure high light sensitivity for demanding frame rate or low light applications
- 2 μ s global shutter selectable independent of frame rate.
- Composite video output for real time monitoring during set up, recording and playback
- Optional remote keypad control with integrated viewfinder
- 2GB, 4GB or 8GB memory options
- 8-bit recording mode increases record duration by 50%
- High performance Gigabit Ethernet interface
- Optional battery backup to protect data in the event of unexpected power loss (Pictured below)



Photron
www.photron.com

FASTCAM SA3

HIGH SPEED VIDEO SYSTEM

TARGET APPLICATIONS:

- Onboard vehicle impact testing
- Military test ranges where a sealed unit is beneficial
- Particle Image Velocimetry (PIV)
- Digital Image Correlation (DIC)
- Biomechanics

Specifications: Frame Rate / Resolution Table

| FRAME RATE (fps) | MAXIMUM RESOLUTION | | | | RECORD DURATION (12-BIT) | | | | | | | | | | | |
|---------------------|--------------------|----------|------------|----------|--------------------------|-------|-------|------------|-------|-------|-----------|-----------|-----------|------------|-----------|-----------|
| | Model 60K | | Model 120K | | TIME (Sec.) | | | | | | FRAMES | | | | | |
| | | | | | Model 60K | | | Model 120K | | | Model 60K | | | Model 120K | | |
| | Horizontal | Vertical | Horizontal | Vertical | 2GB | 4GB | 8GB | 2GB | 4GB | 8GB | 2GB | 4GB | 8GB | 2GB | 4GB | 8GB |
| 1,000 | 1,024 | 1,024 | 1,024 | 1,024 | 1.36 | 2.72 | 5.45 | 1.36 | 2.72 | 5.45 | 1,361 | 2,726 | 5,457 | 1,361 | 2,726 | 5,457 |
| 1,500 | 896 | 736 | 1,024 | 1,024 | 1.44 | 2.89 | 5.78 | 0.90 | 1.81 | 3.63 | 2,164 | 4,335 | 8,677 | 1,361 | 2,726 | 5,457 |
| 2,000 | 768 | 608 | 1,024 | 1,024 | 1.52 | 3.06 | 6.12 | 0.68 | 1.36 | 2.72 | 3,057 | 6,123 | 12,255 | 1,361 | 2,726 | 5,457 |
| 2,500 | 640 | 544 | 896 | 896 | 1.64 | 3.28 | 6.57 | 0.71 | 1.42 | 2.85 | 4,100 | 8,212 | 16,436 | 1,778 | 3,561 | 7,127 |
| 3,000 | 512 | 512 | 896 | 736 | 1.81 | 3.63 | 7.27 | 0.72 | 1.44 | 2.89 | 5,445 | 10,906 | 21,829 | 2,164 | 4,335 | 8,677 |
| 5,000 | 384 | 352 | 640 | 544 | 2.11 | 4.23 | 8.46 | 0.82 | 1.64 | 3.28 | 10,560 | 21,152 | 42,335 | 4,100 | 8,212 | 16,436 |
| 6,000 | 384 | 288 | 512 | 512 | 2.15 | 4.30 | 8.62 | 0.90 | 1.81 | 3.63 | 12,907 | 25,852 | 51,743 | 5,445 | 10,906 | 21,829 |
| 7,500 | 384 | 224 | 512 | 416 | 2.21 | 4.43 | 8.87 | 0.89 | 1.78 | 3.58 | 16,595 | 33,239 | 66,527 | 6,701 | 13,423 | 26,866 |
| 10,000 | 256 | 192 | 384 | 352 | 2.90 | 5.81 | 11.64 | 1.05 | 2.11 | 4.23 | 29,041 | 58,168 | 116,423 | 10,560 | 21,152 | 42,335 |
| 15,000 | 256 | 112 | 384 | 224 | 3.31 | 6.64 | 13.30 | 1.10 | 2.21 | 4.43 | 49,785 | 99,718 | 199,582 | 16,595 | 33,239 | 66,527 |
| 20,000 | 256 | 80 | 256 | 192 | 3.48 | 6.98 | 13.97 | 1.45 | 2.90 | 5.82 | 69,700 | 139,605 | 279,415 | 29,041 | 58,168 | 116,423 |
| 25,000 | 256 | 64 | 256 | 144 | 3.48 | 6.98 | 13.97 | 1.54 | 3.10 | 6.20 | 87,125 | 174,506 | 349,269 | 38,722 | 77,558 | 155,230 |
| 30,000 | 256 | 48 | 256 | 112 | 3.87 | 7.75 | 15.52 | 1.65 | 3.32 | 6.65 | 116,167 | 232,675 | 465,692 | 49,785 | 99,718 | 199,582 |
| 50,000 | 384 | 16 | 256 | 64 | 4.64 | 9.30 | 18.62 | 1.74 | 3.49 | 6.98 | 232,334 | 465,351 | 931,384 | 87,125 | 174,506 | 349,269 |
| 60,000 | 128 | 16 | 256 | 48 | 11.61 | 23.26 | 46.56 | 1.93 | 3.87 | 7.76 | 697,002 | 1,396,053 | 2,794,154 | 116,167 | 232,675 | 465,692 |
| 75,000 | - | - | 256 | 32 | - | - | - | 2.32 | 4.65 | 9.31 | - | - | - | 174,250 | 349,013 | 698,538 |
| 100,000 | - | - | 384 | 16 | - | - | - | 2.32 | 4.65 | 9.31 | - | - | - | 232,334 | 465,351 | 931,384 |
| 120,000 | - | - | 128 | 16 | - | - | - | 5.80 | 11.63 | 23.28 | - | - | - | 697,002 | 1,396,053 | 2,794,154 |

| | |
|-------------------------------|---|
| Sensor | 12-bit ADC (Bayer system color, single sensor) with 17µm pixel size |
| Shutter | Global electronic shutter from 16.7ms to 2µs independent of frame rate |
| Lens Mount | Interchangeable F-mount and C-mount using supplied adapters (Optional High-G block mount available) |
| Extended Dynamic Range | Selectable in twenty steps (0 to 95% in 5% increments) to prevent pixel over-exposure |
| Memory | 2GB (standard), 4GB (optional) and 8GB (optional) |
| Video Outputs | NTSC/PAL composite VBS (BNC). Ability to zoom, pan and scroll within image via keypad (option). Live video during recording |
| Camera Control | Through optional keypad with integrated viewfinder and Gigabit Ethernet or RS-422 |
| User Preset Switch | User selectable camera function control mounted on the camera's rear panel |
| Low Light Mode | Low light mode for simple camera adjustment when working in low ambient light, high frame rate or short exposure modes |
| Triggering | Selectable positive or negative TTL 5Vp-p or switch closure |
| Trigger Delay | Programmable delay on selected input and output triggers, 100ns resolution |
| Timing | Internal clock or external source |
| IRIG Time Code | IRIG/GPS timing is recorded in real time on every frame |

| | |
|---------------------------------------|---|
| Event Markers | Ten user entered event markers mark specific events within the image sequence in real time. Immediately accessible through software |
| Variable Framerate/Resolution | User selectable Variable Framerate/Resolution function adjustable in 128 x 16 pixel steps |
| Selectable Recording Bit Depth | User selectable 12-bit (high-dynamic range) or 8-bit (50% frame increase) recording mode |
| Trigger Modes | Start, End, Center, Manual, Random, Random Reset |
| Saved Image Formats | JPEG, AVI, TIFF, BMP, RAW, PNG, MOV, and FTIF. Images can be saved with or without image or comment data |
| Data Display | Frame Rate, Shutter Speed, Trigger Mode, Date or Time, Status (Playback/Record), Real Time, Frame Count, Resolution and LUT |
| Partitioning | Up to 8 memory partitions may be set by the user |
| High-G | Tested to 100G, 10ms, six-axis |
| Operating Temperature | 0-40 degrees C (32-104 degree F) |
| Mounting | 1 x 1/4-20 UNC, 6 x M5 on all four sides |
| Dimensions | 120mm (4.72")H x 120mm (4.72")W x 215.8mm (8.50")D *excluding protrusions |
| Weight | 9.48 lbs (4.3kg) |
| Power Requirements | 100V-240V AC ~ 1.5A, 50-60Hz optional DC operation 22-32VDC, 60VA |

Specifications subject to change without notice



ROCKY MOUNTAIN HIGH SPEED, LLC
TEL: 406-599-5577
EMAIL: INFO@RM-HS.COM
WWW.RM-HS.COM

Photron

SLOW MOTION IMAGING SOLUTIONS

WWW.PHOTRON.COM